

Last update: September 2015

World leaders in growth performance

Growth rate is one of the most important goals for tilapia producers.

High growth rates bring many advantages:

- Producers gain the ability to grow more crops per year, particularly in those sites where environmental conditions are optimal all year round.
- Fish can reach higher weight gains in shorter time, a very important characteristic in those sites where environmental conditions are not optimal during part of the year and farmers has short windows of opportunity to grow their crops.
- Shorter grow-out cycles mean also an opportunity to manage and reduce the risk of mortality and escapees since fish will be spending less time in the water and,
- As you produce more fish per unit of investment, your capital expenditure in licenses and grow-out infrastructure goes down and you are capable of controlling costs better because your fixed costs become diluted into higher volumes of production.

Field Documentation of GenoMar Supreme Tilapia®
- from 20gr to 1000 gr in 125 days.

GenoMar follows up growth performance through field trials. We have a unique opportunity through our sister company in Malaysia to document performance in real commercial condition.

The following figure represents average performance in 2014 cohort under conditions described below.

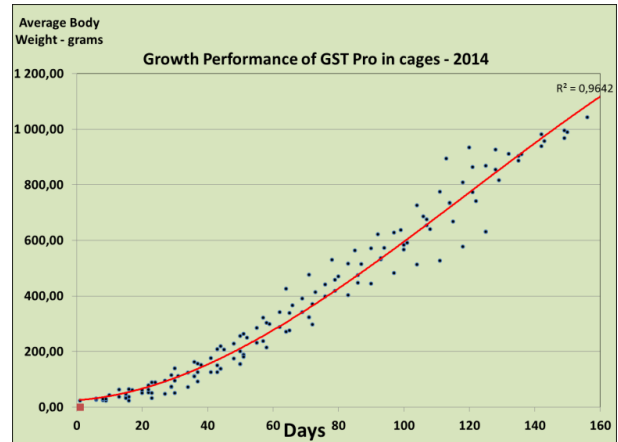


Figure 2: Conditions in field trial : Initial Body Weigh (25gr) - Average temperature (30°C) - Feed protein (32%) - Density (20kg/m3).

Economic Benefit

Here is an example illustrating the effect of higher growth rates in a 1000 ton/year facility. Facility A is capable of growing fish from 30 grams to 1000 grams in 200 days, while a facility B using GST Pro® is capable of achieving same growth in just 125 days.

	Strain X	Genomar	%
Annual Production (tons/yr)	1000	1577	+38%
Juvenile units /ton	1667	1333	-25%
Mortality (%)	40%	25%	-37%
FCRe	1.76	1.55	-12%
Production cost	1,9	1,69	-12%

Growth models and feed management

In addition we have generated significant know-how in best management practices that can be transferred to our partners. We help our partners to customize specific growth models specific to your farm/site conditions and temperature profiles so you're able to support the full potential of GST Pro genetics through best feeding practices.

Last update: September 2015

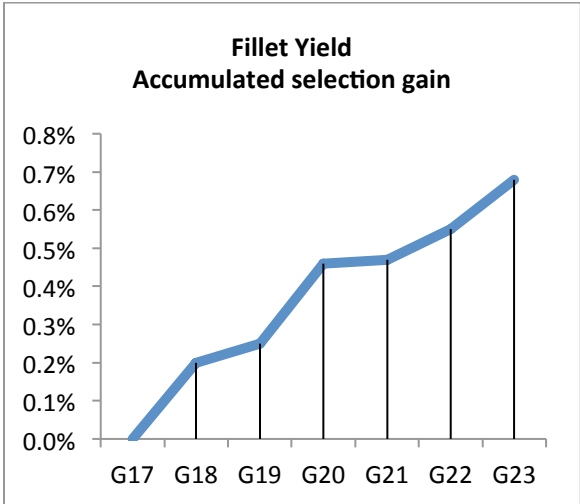
Fillet Yield

Expected Fillet Yield in Commercial Processing

From Whole Round to Skin-on/scale-on fillets

51%

GST Pro offers as well a good balance between growth and fillet yield. We have been working on fillet yield selection for the past 7 years achieving gains of approximately 0,1% per generation



Size distribution

